

Figure S3

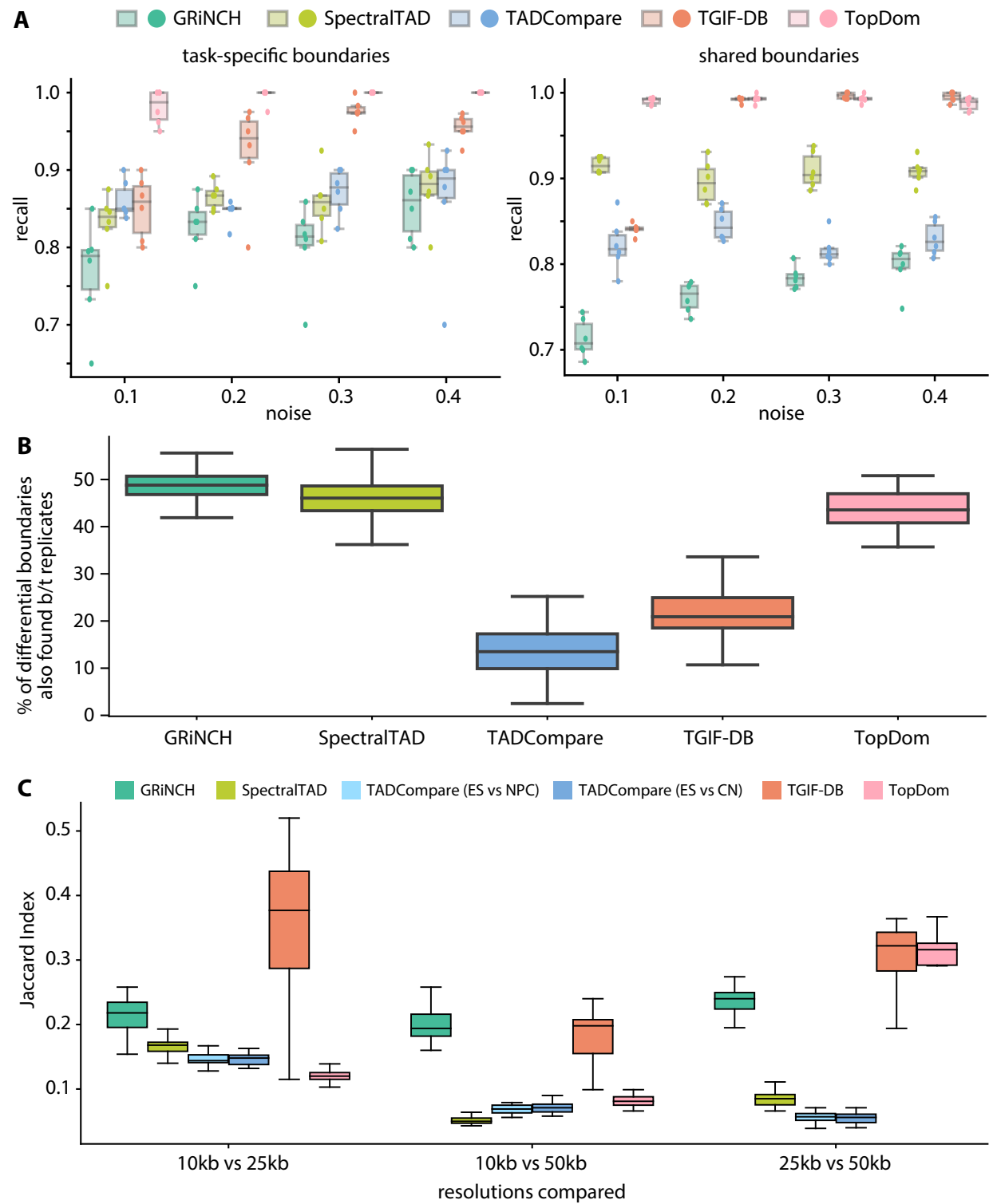


Figure S3. Benchmarking TGIF-DB. **(A)** Recall on simulated data. **(B)** Percentage of differential boundaries between day 0 and day 2 of cardiomyocyte differentiation overlapping with (false-positive) differential boundaries found between two biological replicates within single timepoint. **(C)** Similarity of boundary sets from input data of different resolutions (10kb, 25kb, and 50kb).